

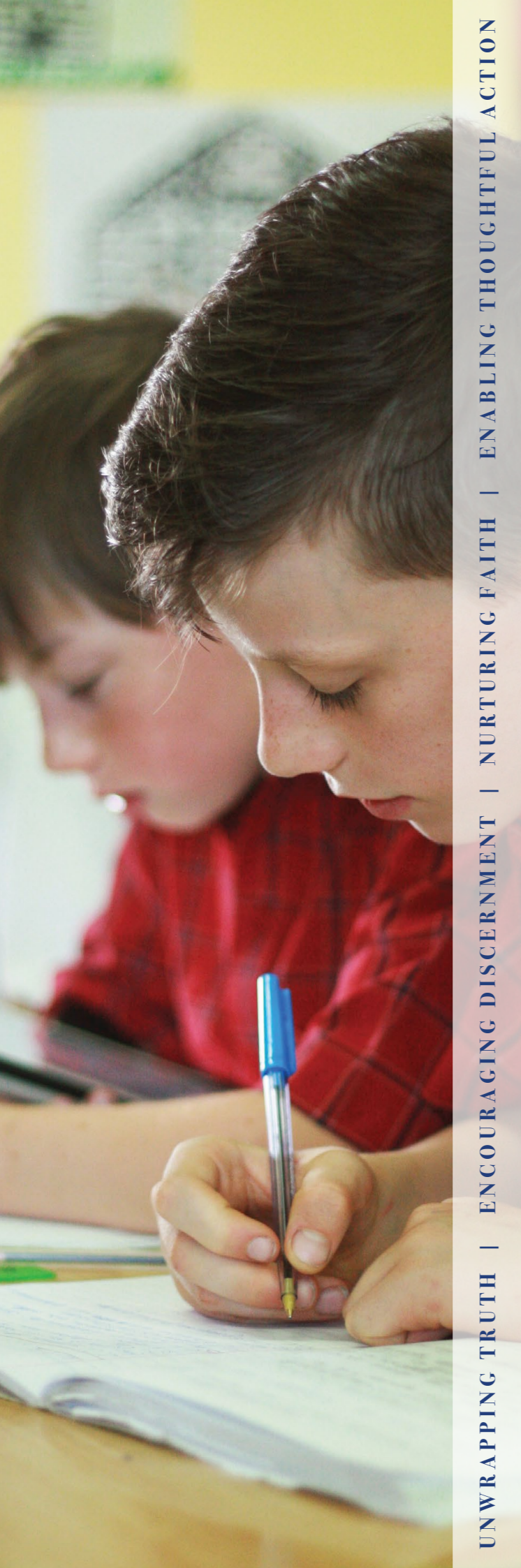


Wycliffe Christian School

UNWRAPPING TRUTH | ENCOURAGING DISCERNMENT
NURTURING FAITH | ENABLING THOUGHTFUL ACTION

P R O S P E C T U S





UNWRAPPING TRUTH | ENCOURAGING DISCERNMENT | NURTURING FAITH | ENABLING THOUGHTFUL ACTION

about wycliffe

Wycliffe is an independent, non-denominational Christian school. Nestled amidst natural bushland in the Lower Blue Mountains the School provides a wonderful setting for Preschool to Year 12 education.

Wycliffe enjoys a fine heritage in Christian education. The School provides quality and engaging education delivered through a distinctly Christian worldview.

Wycliffe seeks to empower parents in their God given responsibility for the upbringing and education of their children. The School recognises the vital role of parents in the educative process, and prides itself on the strength of its partnership with home.

Wycliffe inspires intellectual curiosity, develops critical thinking skills and promotes creativity through a collaborative and inspiring learning environment.

Wycliffe encourages students to take seriously the claims of Christ, celebrating His lordship over all life. Further, the School's desire is to empower young people to enjoy all that God has for their lives.

what is christian education?

Christian education invites young people to see and understand the world through the perspective of God's truth. It promotes a biblical vision for life, culminating in Jesus Christ, through whom the whole of creation is made right with God.

The integrity of knowledge is upheld with students experiencing a rigorous engagement with each academic discipline, being encouraged to explore and question. Students discover that the laws of science, the amazing patterns within mathematics, the beauty of poetry, the creativity of the arts, all have their source in God.

Christian schooling is far more than values based education. God's truth speaks into our very being, and becomes the standard reflected on a daily basis through shared relationships across all realms of life.



preschool

As the beginning of a seamless transition from Preschool to Year 12, Wycliffe Preschool provides a wonderful introduction to Christian worldview education.

The Preschool delivers quality curriculum firmly founded on biblical truth and values. The engaging learning environment draws upon the Early Years Learning Framework, consistent with the National Quality Framework, preparing children for the expectations of formal schooling.

Further, the Preschool provides children with continuity and security in pre-established relationships as they start school.



junior school

Kindergarten to Year 6

Experienced and caring teachers provide a quality educational experience in the midst of a supportive learning environment where students are valued and encouraged.

Teaching is integrated across Key Learning Areas providing greater context and meaning to learning. Specific focus is given to the development of literacy and numeracy skills. The first session each day focuses on literacy, and Mathematics groups are ability based.

Wycliffe enjoys a reputation as a centre for excellence in the Creative Arts, and specialist trained teachers deliver Music across the Junior School. The School values the global connections we share and students experience a second language with Spanish taught from Kindergarten.

A unique feature of Wycliffe Junior School is the enriched Stage 3 (Years 5&6) program through which students are prepared for secondary schooling. The facilities of the Senior School (Years 7-12) are drawn upon, with students regularly using Science laboratories, Technical and Applied Studies workshops, and Drama facilities.

All this is delivered through a distinctive Christian worldview, where students learn of their value in the eyes of God, and His purpose for their lives.





COURAGING DISCERNMENT | NURTURING FAITH | ENABLING THOUGHTFUL ACTION

senior school Years 7 to 12

Students of the Senior School enjoy rigorous and engaging learning experiences. Generous subject offerings are available to students and the School possesses an excellent record of academic performance in the Higher School Certificate.

Learning programs are differentiated providing support for students who struggle academically, as well as catering for those with specific gifts and interests.

Integrated pastoral initiatives such as the Year 9 Encounter Program provide the necessary nurture and support as students navigate the difficult years of adolescence, fostering responsibility through leadership and service.

In addition to traditional learning pathways, Wycliffe is a member of the Key Alliance of schools through which students as part of their normal pattern of study can undertake trade-based courses in areas such as Construction, Hospitality and Electrotechnology.

Trade Training Centre

Wycliffe received a Commonwealth grant to establish an on-campus Trade Training Centre. Integral to the School's technology facilities is the Construction workshop where students are prepared for future careers in the building industry. Commercial kitchen facilities prepare students for work in the ever expanding hospitality industry.

Sport

Senior School students have opportunity to participate in regular midweek competitive sport. Team sports include rugby league, soccer, netball, cricket, basketball and touch football. Varying competitive sporting teams serve the interests of students of the Junior School.

Students with particular gifting in the sporting realm have access to state and national representative honours through the Christian Schools Sports Association.

Co-curricular

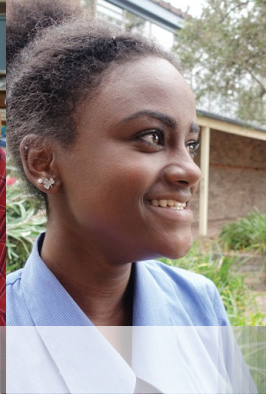
Co-curricular opportunities have included varying vocal and instrumental musical groups, drama, dance, Duke of Edinburgh and chess. Students also enjoy the opportunity to learn a musical instrument at school through visiting Music tutors.

Global Connections

Sister school relationships with Taufa áhau Pilolevu College, Tonga and Living Spirit and China Holiness Colleges, Hong Kong see students involved in overseas cultural and faith exchanges. The School has also been involved in mission and service programs to South America as well as orphanages in Bali.



UNWR



Partnership with Parents

Parents are always welcome at the School. In line with our philosophy of education parents are encouraged to be fully involved in the education of their children.

Café 133

The School Café/Canteen provides healthy lunches, drinks and snacks at a low cost. A broader menu choice is available to senior students, staff and parents.

Uniform

Wycliffe possesses a very attractive and functional uniform that students wear with pride. All students are required to adhere to the uniform code. Further details of the Wycliffe uniform are available on the website.

School Hours

Preschool: 8:30am – 2:30pm
 Junior School: 8:30 am – 2:45pm
 Senior School: 8:20am – 2:50pm

Transport

Buses transport students to and from school servicing the Lower and Upper Blue Mountains, Penrith and Hawkesbury regions.

Fees

Wycliffe is committed to keeping fees affordable for families. The fee schedule is available on the School website or from the Registrar.



enquiries

All enquiries should be directed to:

The Registrar
 Wycliffe Christian School
 PO Box 78
 Blaxland NSW 2774

Phone (02) 4753 6422
 Email: registrar@wycliffe.nsw.edu.au

For further information, please visit the School website:
www.wycliffe.nsw.edu.au